

The background of the image is a landscape photograph showing a valley with green trees in the foreground and a town in the distance under a blue sky with white clouds. The text is overlaid on this image.

ISRAEL

and

PALESTINE

Current Realities

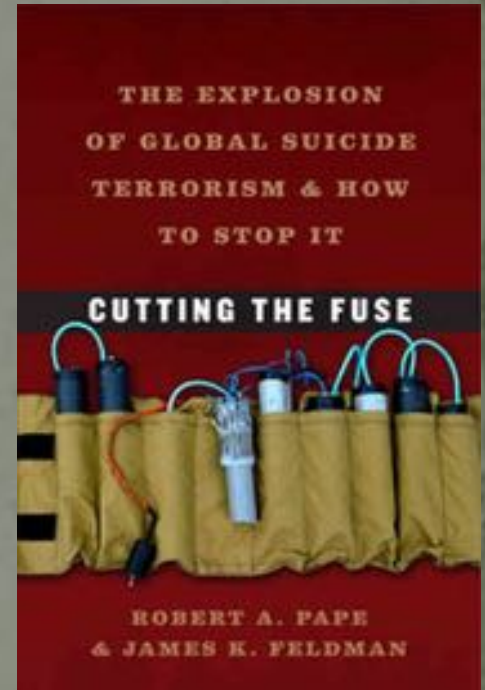
Suicide Bombing

- 1989 – First bombing
- 1993 – 2 bombings
- 1994 – Baruch Goldstein
 - 5 bombings
- 1995-96- 8 bombings
- 1997-2000 – 12 bombings
- 2001 – 40 bombings
- 2002 – 47 bombings
- 2003 - 23 bombings
 - 468 *fatalities*
- 2004 – 17 bombings
- 2005 – 9 bombings
- 2006-2008 – 6 bombings



Suicide Bombing and Islamic Fundamentalism

- “Principal cause of suicide terrorism is resistance to foreign occupation, not Islamic fundamentalism ... [which] functions mainly as a recruiting tool.” – *Cutting the Fuse*
- “Foreign occupation accounted for *nearly all* ... 95%.”

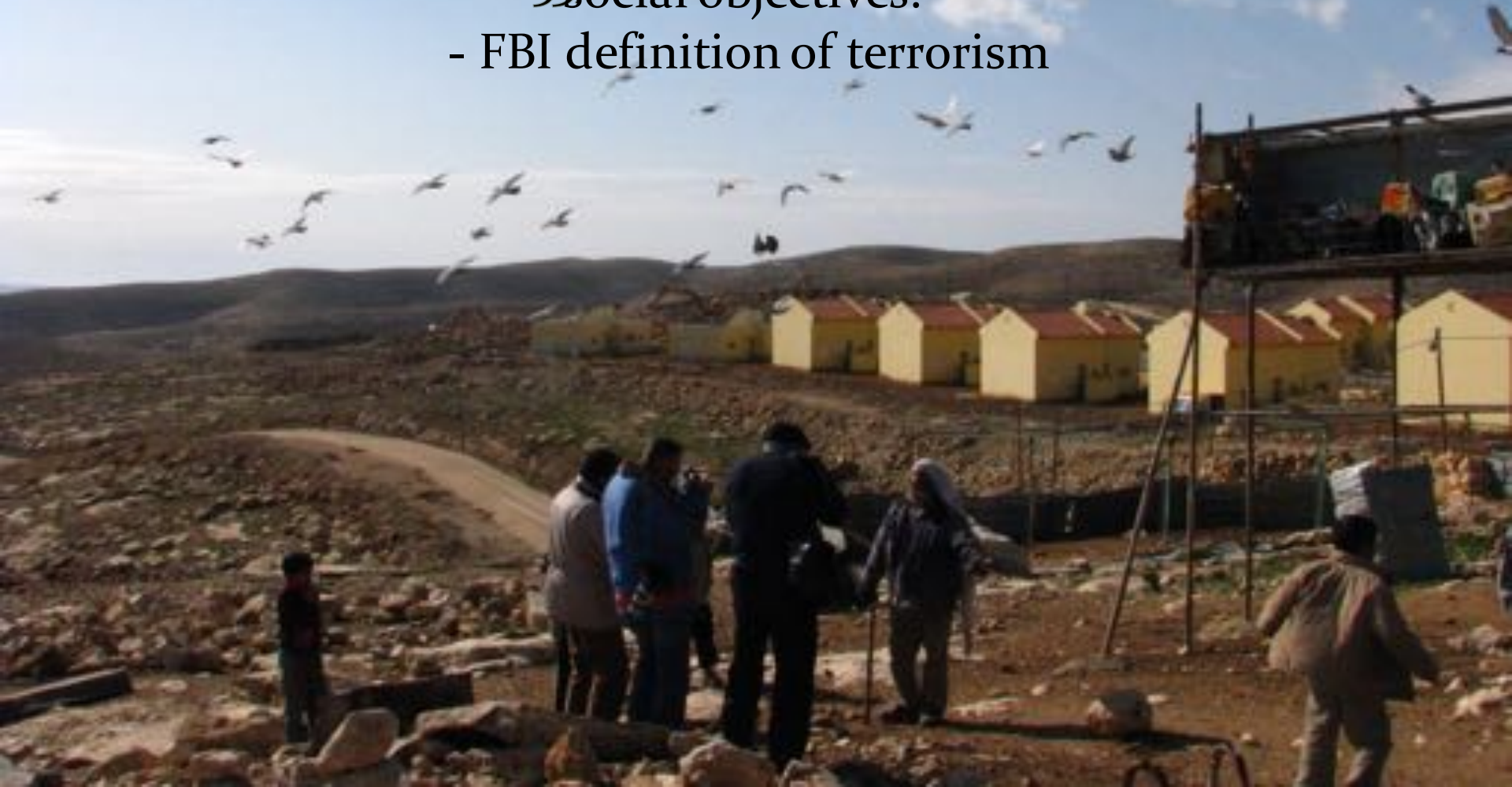




“the unlawful use of force and violence against
“Any destruction by the Occupying Power of real or personal
property belonging to individuals in the occupied territory...is
prohibited”
-Article 53, Fourth Geneva Convention

Since 1967, 27,000 Palestinian homes and structures destroyed

- FBI definition of terrorism



Settlements

- Israeli Jewish housing units (towns, cities) in land occupied during 1967 war (i.e., in Gaza Strip and West Bank)
 - Gazan settlements withdraw in 2005 by Sharon











International Law

Article 49 – Fourth Geneva Convention:

“The occupying power shall not deport or transfer parts of its own population into the territory it occupies...”

“Facts on the Ground”

- 600,000+ settlers in over 120 government-sanctioned settlements
 - Not including outposts
 - 15% of settlers are US citizens
(Newsweek, 8/28/15)



Suicide Bombing

- 1989 – First bombing
- 1993 – 2 bombings
- 1994 – Baruch Goldstein
 - 5 bombings
- 1995-96- 8 bombings
- 1997-2000 – 12 bombings
- 2001 – 40 bombings
- 2002 – 47 bombings
- 2003 - 23 bombings
 - 468 *fatalities*
- 2004 – 17 bombings
- 2005 – 9 bombings
- 2006-2008 – 6 bombings





THE WEST BANK BARRIER

Security Fence vs. Separation/Apartheid Wall

Construction begins in 2002



FENCE



FENCE



WALL



WALL



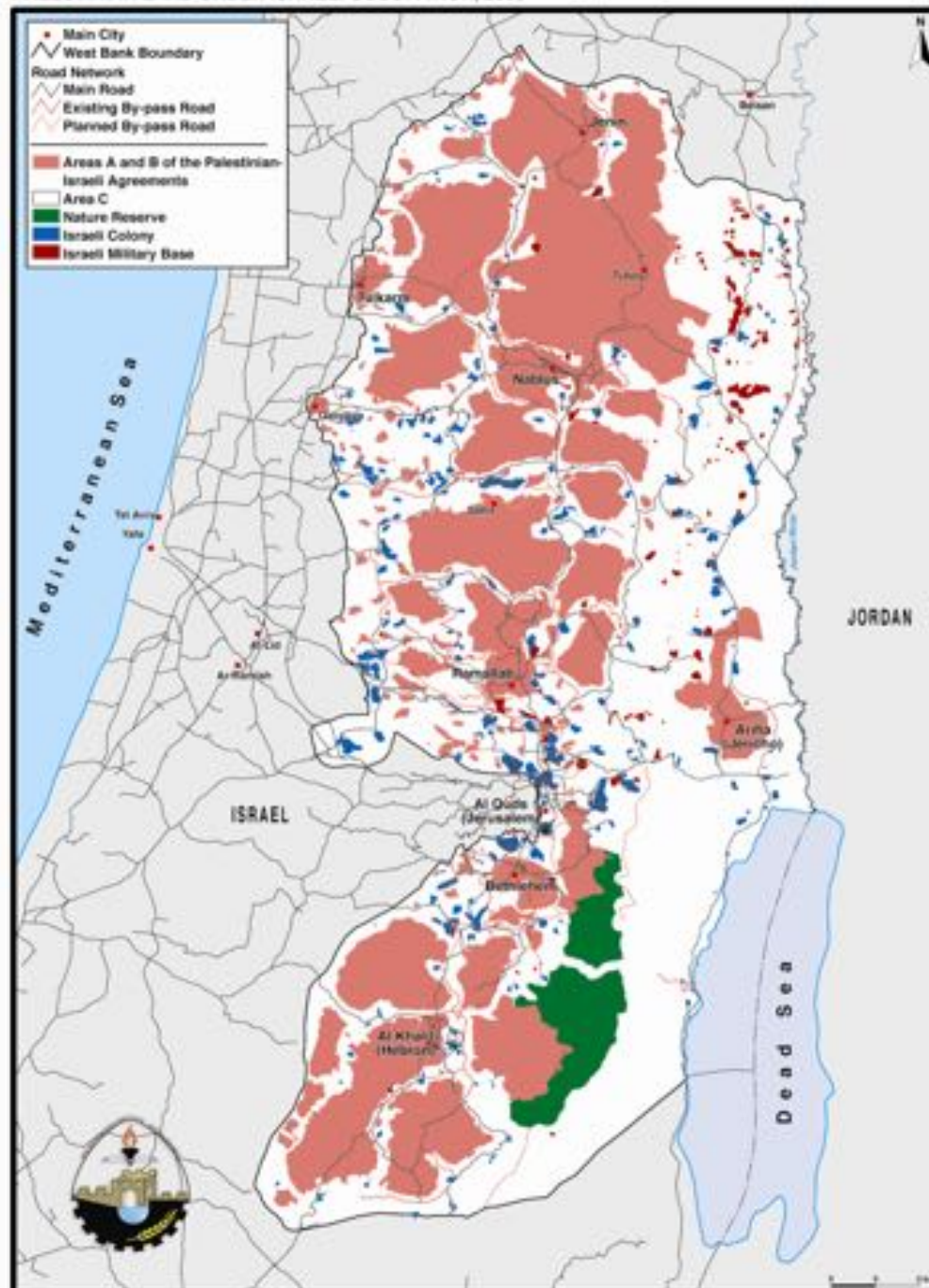
The Wall – Basic facts

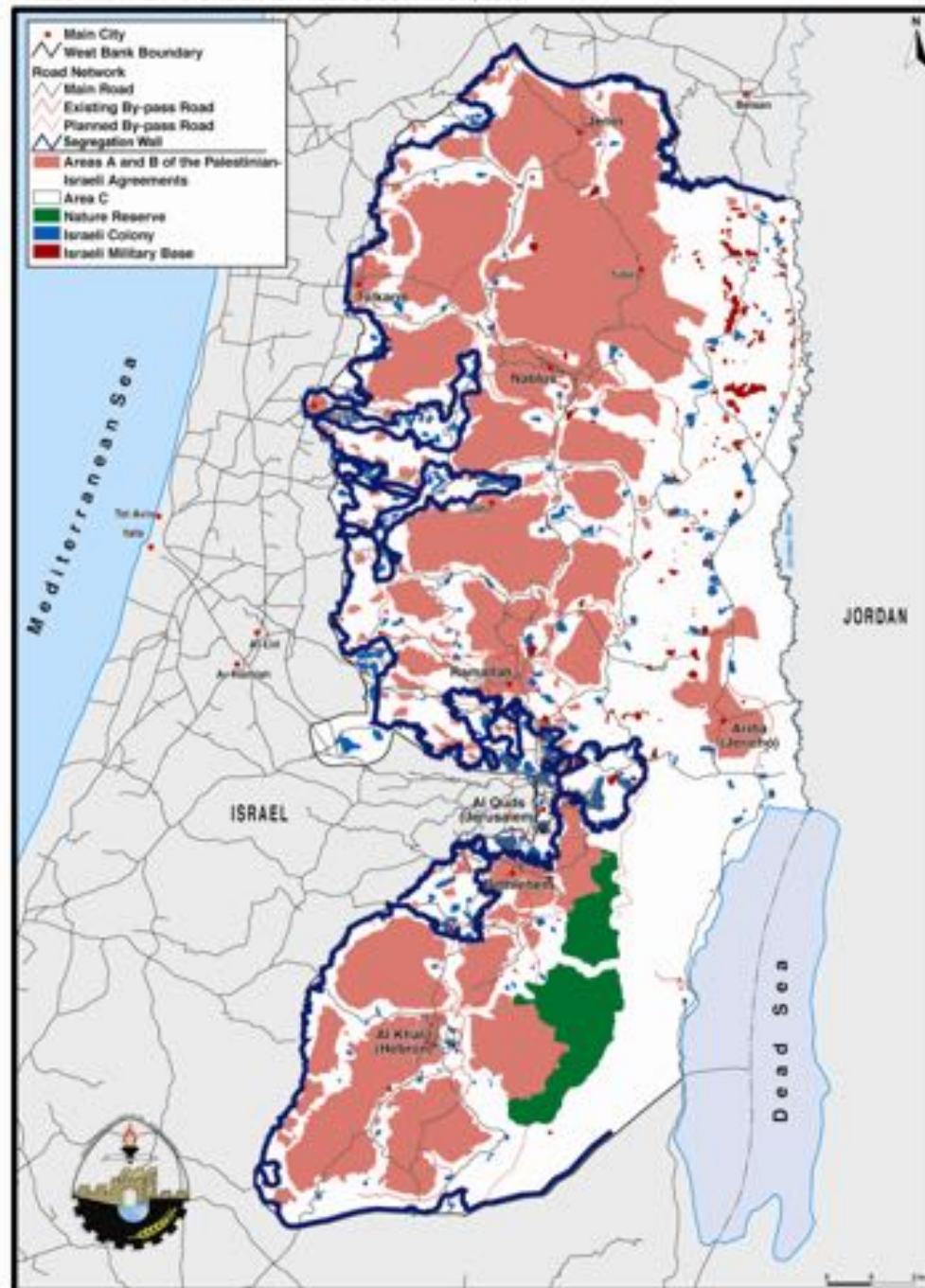
- Construction began 16 June 2002
- 25-40 foot high concrete slabs, trenches, barbed wire “buffer zones”, electrified fencing, watch towers, thermal imaging video cameras, sniper towers, and patrol roads
- Where is it exactly?



Final Status Issues

- **Borders**
- **Settlements**
- **Water**
- **Refugees**
- **Jerusalem**





The Wall – Separation or Security?

- Construction began 16 June 2002
- 25-40 foot high concrete slabs, trenches, barbed wire “buffer zones”, electrified fencing, watch towers, thermal imaging video cameras, sniper towers, and patrol roads
- Total length – 723 km (420 miles) – twice the length of the Green Line (1949 Armistice Line)
- 57% (240 miles) completed; 9% (40 miles) under construction; 34% (140 miles) not yet begun
- 14% will be on the Green Line or in Israel; 86% will be inside the West Bank

The Wall – Separation or Security?

- 385,000 settlers (80 settlements) live between the Wall and the Green Line
- 28 Palestinian communities (125, 000 residents) will be surrounded on three sides by the Wall
- 8 communities (26,000 residents) will be surrounded on four sides by the Wall – connected to WB by road or tunnel
- Cost – \$3.7 million per km = \$4 billion total
 - Savings of \$1.7 billion if built along Green Line

HUMANITY

Nadson

Israel-have you
become the evil you
deplored?

MADE IN USA

I HAVE A

DREAM

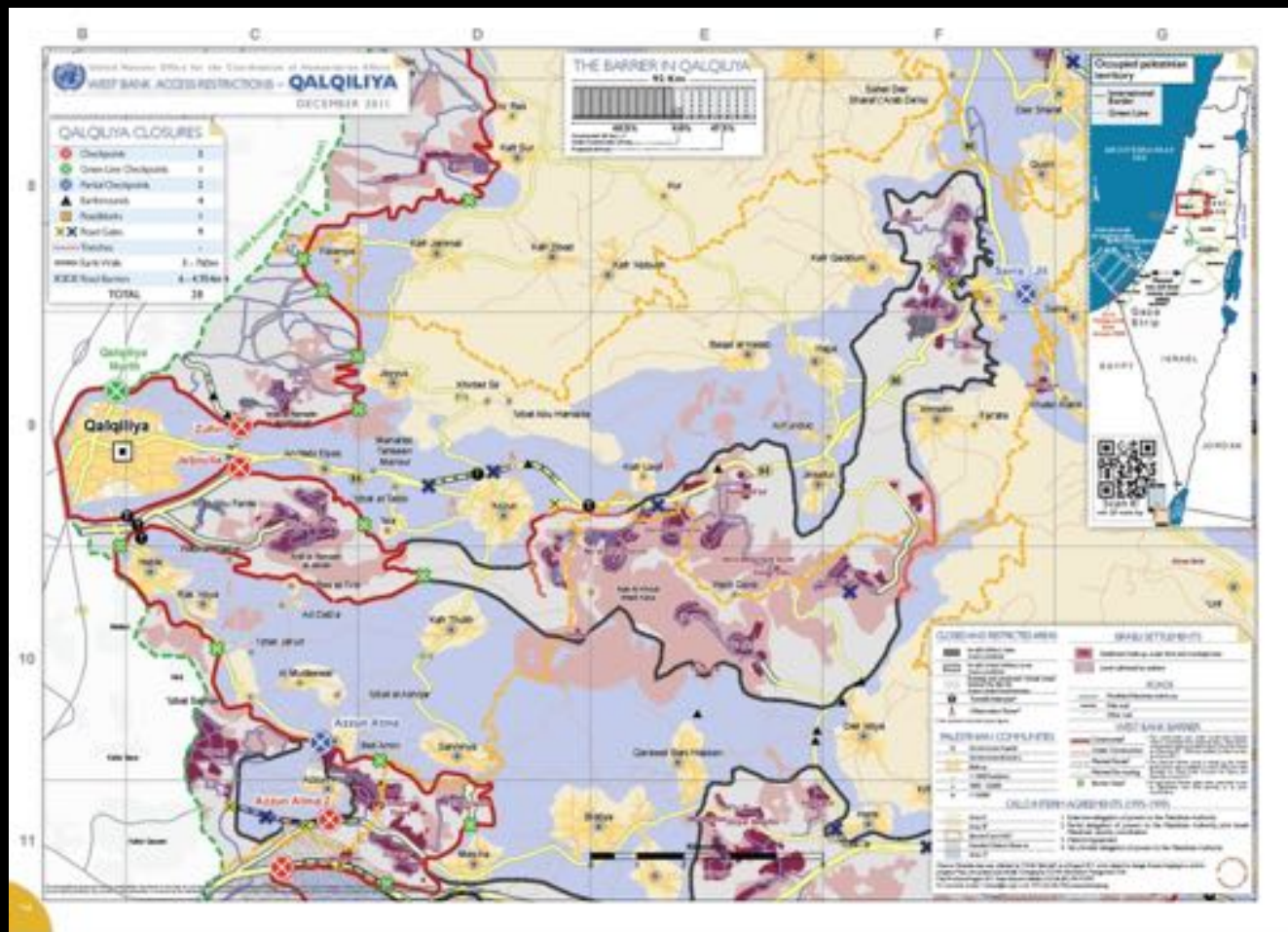
THIS IS NOT

PART OF THAT

WALL'S DREAM

-PINK F







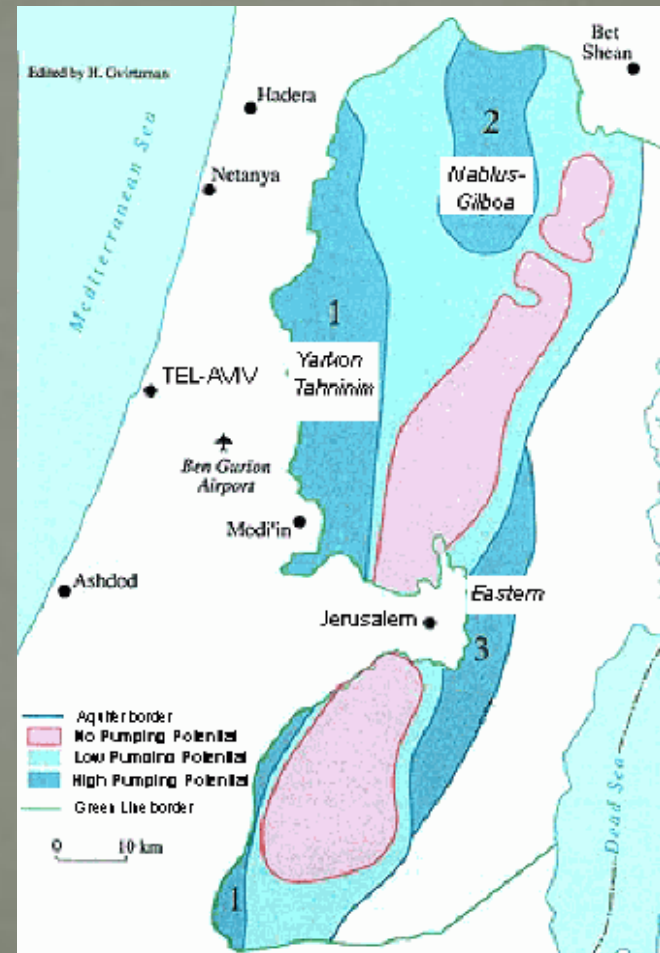


Final Status Issues

- Refugees
- Settlements
- Borders
- **Water**
- Jerusalem

Water in the oPT

- Two water systems in Israel and the oPT
 - **Underground – Mountain Aquifer**
 - 130 km (78 miles) from north to south; 35 km (20 miles) east to west
 - Three sub-aquifers
 - Western – primary – best water
 - Most of recharge area in WB
 - Entire storage area in Israel
 - 95% of water used by Israel
 - Northern Aquifer
 - Recharge and storage areas essentially in WB
 - 70% of water used by Israel
 - Eastern Aquifer
 - Entirely in WB
 - 37% of water used by Israel, mostly by settlers







Water in the oPT

- Two water systems in Israel and the oPT
 - Surface system – Jordan Basin
 - 330 km (190 miles) from north to south; average width of 30 m
 - Used by Israel, Jordan, Syria, and Lebanon
 - Palestinians have no access to this water
 - 90% of water is diverted – whole ecosystem is endangered
 - Israel uses 30% of this water



Water in the oPT

- Per capita water use in oPT – average 63 L/person/day
 - 7% of communities - <30 liters/person/day
 - 36% - 30-50 l/d
 - 41% - 50-100 l/d
 - 16% - >100 l/d
 - **WHO *minimum* recommendation – 100 liters per person per day**
- Gaza – only 7% of water meets WHO standards
 - Cholera, dysentery, hepatitis, yellow fever
- Israelis use 3 times as much water per person per day as do the Palestinians



Flowers in the desert

Irrigation in the former
Israeli settlement of Gush
Katif in the Gaza Strip

Settlements

- Inequity in resource utilization
- Water
 - Settlers – domestic consumption of 280 L/person/day
 - Palestinians – 86 L/person/day
 - WHO recommended minimum – 100 L/person/day
 - But – most water use is for farming and industrial purposes – therefore, inequity is much greater
- Land
 - 3% of West Bank is occupied by settlers
 - 40% controlled and confiscated for roads and areas around settlements



Settlements

Israeli home in
Gush Katif



Settlers:

\$

Palestinians:

\$\$\$\$

\$\$\$\$\$\$\$\$\$\$\$\$\$\$\$\$



WATER CONSUMPTION IN ISRAEL, THE WEST BANK AND THE GAZA STRIP

IN LITERS, PER PERSON, PER DAY

0762
W TALEM
بتسليم

WATER CONSUMPTION IN ISRAEL *

183
LITERS

AMOUNT RECOMMENDED BY
WORLD HEALTH ORGANIZATION

PALESTINIANS IN WEST BANK
CONNECTED TO WATER GRID

PALESTINIANS IN WEST BANK
NOT CONNECTED TO WATER GRID

PALESTINIANS IN
GAZA STRIP

AT LEAST
LITERS 100

73 LITERS

20-50 LITERS

70-90 LITERS
ONLY IN GAZA
WITH CONNECTION

(EXCLUDES BY DIRECT
WATER SUPPLYING)

(DIRECT WATER SUPPLY)

(FROM COLLECTED RAINWATER
AND WATER TRUCKS)

(DIRECT WATER SUPPLY)

Road Gates

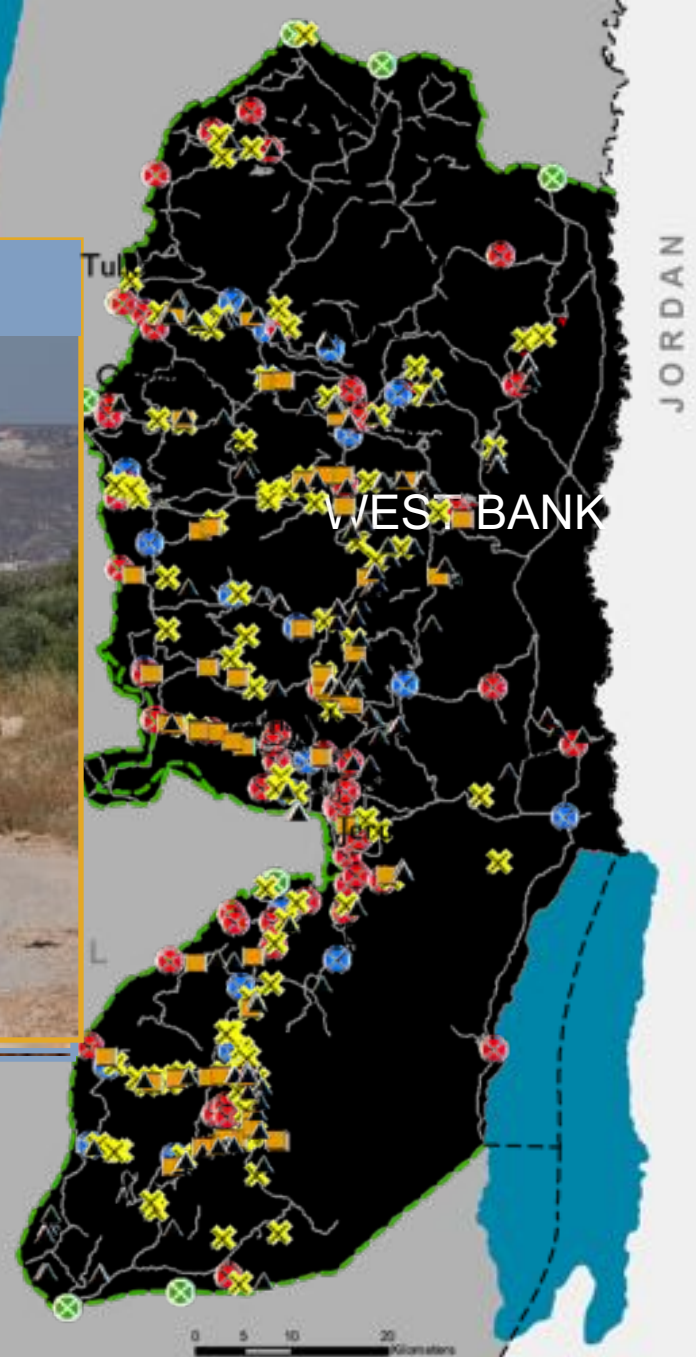


continued by road to
movement across the
country vehicle access

DDDD

EARTH WALLS

A continuous wall or
series of earth mounds.
periodically.



Number of Obstacles

20% increase from July 2011 to July 2012

42 obstacles removed, 62 new installed



61

CHECKPOINTS

A barrier manned by IDF and/or Border Police.



25

PARTIAL CHECKPOINTS

An established checkpoint operating periodically.



108

ROAD GATES

A metal gate, often manned by IDF, to control movement along roads.



65

ROADBLOCKS

A series of 1 metre high concrete blocks used to obstruct vehicle access.



206

EARTHMOUNDS

A mound of rubble, dirt and/or rocks used to obstruct vehicle access.



TRENCHES

A ditch used to prevent vehicle crossing.



ROAD BARRIERS

Road barriers placed alongside major roads prevent movement across the roads.



EARTH WALLS

A continuous wall or series of earth mounds used to restrict access.

In total 542 obstacles
As of June 2012



Flying Checkpoints
Average:
410 per month

Areas A and B (Oslo Accords)



Areas C



149 Israeli settlements,
100 outposts and land cultivated by Israelis



Israeli military closed areas (Fire Zones) and 48 military bases

Nature Reserves

West Bank Barrier and Areas between the Barrier and the Green Line

Restricted Roads



Closures and Checkpoints

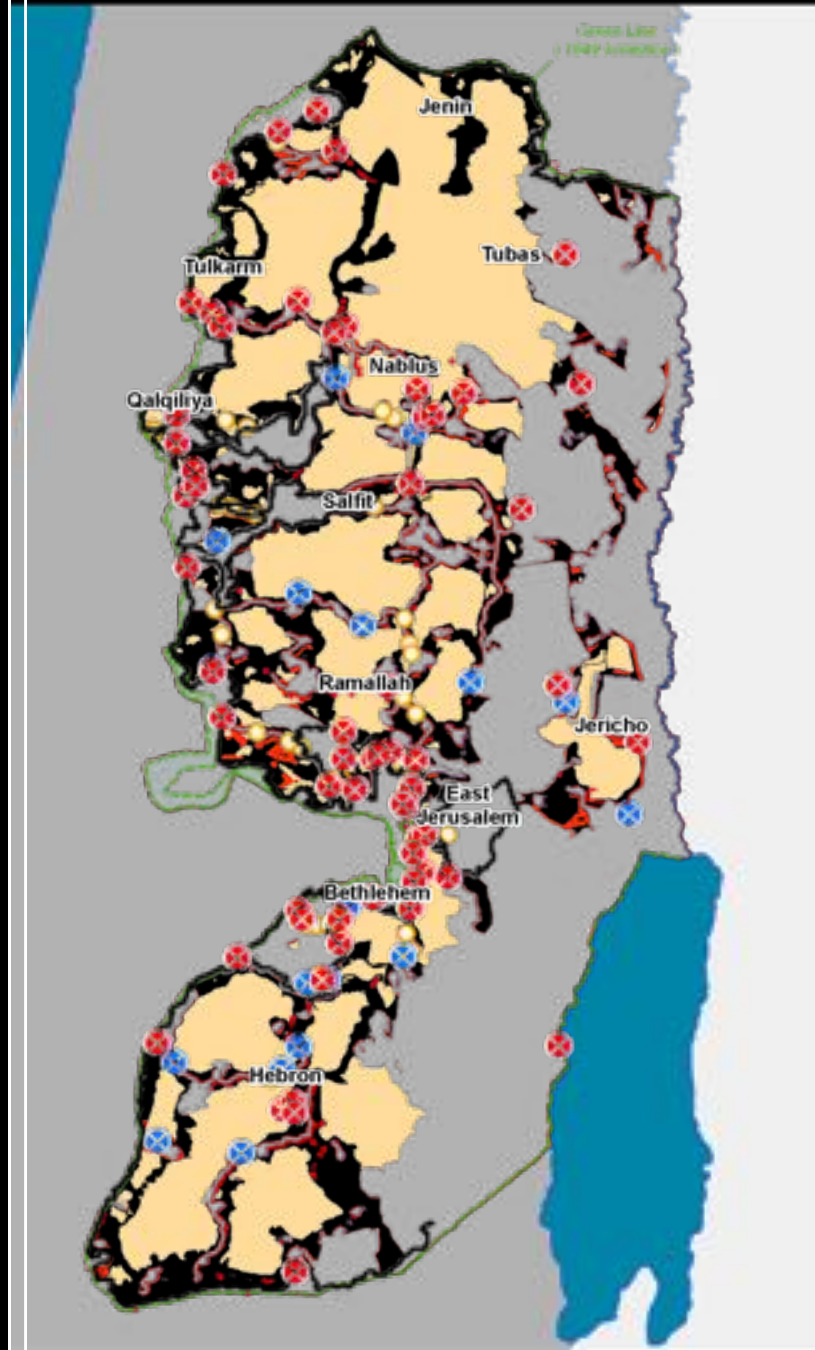
The effect of the closures and the road system

Fragmentation of the West Bank



Tunnels

(As of September 2008)



PALESTINIAN LOSS OF LAND 1946-2010



■ Land of Native Nations

■ Land taken from Native Nations

1850

1865

1880

1990

■ *Reservations



Final Status Issues

- Borders
- Settlements
- Water
- Refugees
- Jerusalem